

If you're a European Union (EU) citizen living in the UK, you and your family need to apply to the EU settlement scheme if you want to continue living here after 31st December 2020.

What is the scheme?

The scheme will allow you & your family to continue to live and work in the UK. It will mean you are eligible for:

- ◆ Public services, such as healthcare and schools
- ◆ Public funds and pensions
- ◆ British Citizenship, if you meet the requirements and want to apply.

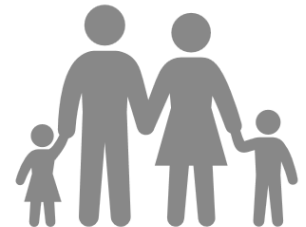
Who is eligible?

Who is eligible?			
	Austria		France
	Belgium		Germany
	Bulgaria		Greece
	Croatia		Hungary
	Republic of Cyprus		Iceland
	Czech Republic		Ireland
	Denmark		Italy
	Estonia		Latvia
	Finland		Liechtenstein
			Lithuania
			Luxembourg
			Malta
			Netherlands
			Norway
			Poland
			Portugal
			Romania
			Slovakia
			Slovenia
			Spain
			Sweden
			Switzerland

Family Members of eligible Citizens.

Non-EU family members living in the UK by 31.12.2020 are eligible to apply. Close family members who are not living in the UK by 31.12.2020 will be able to join their EU family member in the UK at any point in the future, as long as the relationship still exists.

Close Family Members Definition– Spouses/ Civil Partners/ Unmarried Partners/ Children/ Grandchildren/ Dependent Parents and Grandparents.



Indefinite leave to remain/Enter

You do not need to apply if you have indefinite leave to remain or enter in the UK OR if you are an Irish Citizen, but you can do if you want to. All family members outside of the UK will need to apply to the scheme.

Permanent Residence Document (BRP)

You will still need to apply to the scheme.

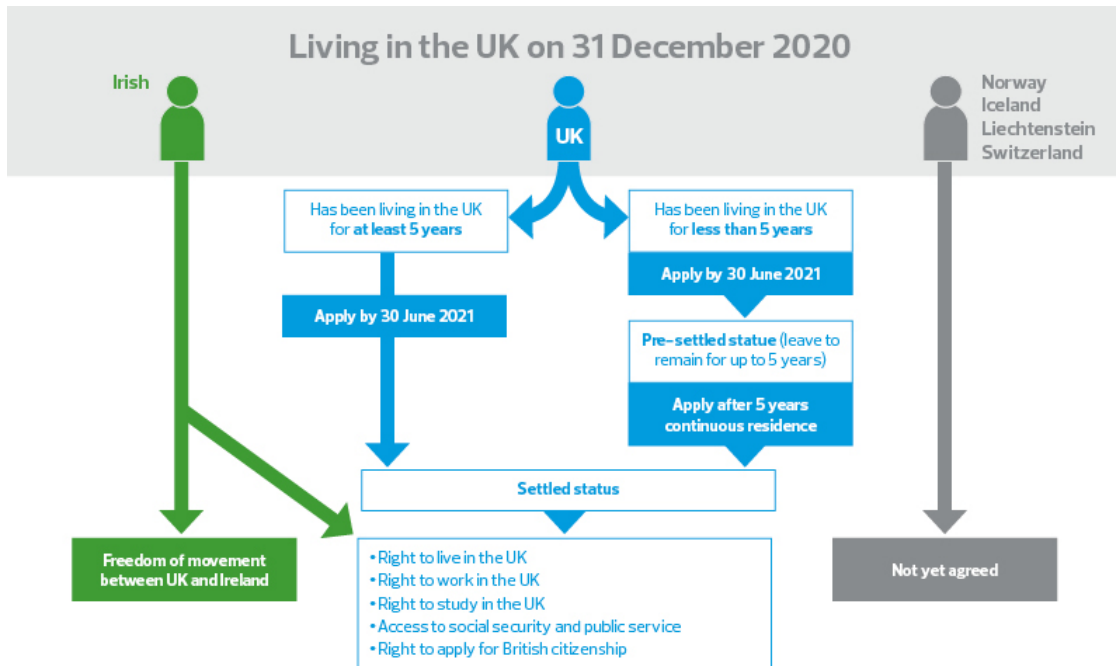
Settled status and pre-settled status

If you have been a resident in the UK for more than 5 continuous years you will be eligible for settled status. If you receive settled status this means there is no time limit on how long you can stay in the UK.

If you have been a resident for less than 5 years you will be eligible for pre-settled status. If you receive pre-settled status this means you can stay in the UK for a period of 5 years. This will allow you to remain in the UK until you are eligible for settled status.

Do I need to apply?

This short infographic details who needs to apply and by when:



How to apply

To obtain settled or pre-settled status, you will need to fill in a short online application form. The application will ask for basic and factual information. The application consists of verifying identity/Confirming your residence and a criminality check. Successful applicants will receive a digital proof of their status through the online service. In most cases your new immigration status will be granted within a couple of weeks and informed of how to access this on gov.uk.



Help & Support

The Exclusive Services Group are committed to supporting our staff through all the changes that Brexit will entail, we have a dedicated support team at all of our offices who can be contacted on the details below:

- Hatfield Head Office
Ground Floor Prospect Place, 85 Great North Road, Hatfield, Herts, AL95DA
Tel – 01707 264400
- Swindon Admin Office
Unit 9 Shrivenham 100 Business Park, Shrivenham, Swindon, SN6 8TZ
- Wokingham Head Office
Unit 20 The Metro Centre, Toutley Road, Wokingham, RG41 1QW

For further guidance, you can visit: <https://www.gov.uk/settled-status-eu-citizens-families>